



Approved for  
ORG. FARMING

made in  
Germany



## BIOSTIMULANT WITH ORGANIC TRACE ELEMENTS

**FULVITAL® Plus Liquid** is a liquid fertilizer with trace elements based on a natural biopolymer biostimulant.

The biopolymer acts as a natural chelating and complexing agent for micronutrients. With a low molecular weight, the molecules can be absorbed through the leaves and roots, transporting chelated metals within the plants.

**FULVITAL® Plus Liquid** supplies the cultivated plant with iron (Fe), zinc (Zn), manganese (Mn) and copper (Cu), and promotes general nutrient uptake and plant development. **FULVITAL® Plus Liquid** can be used as a soil treatment, foliar application or in hydroponics for acute and preventive treatment of deficiency symptoms of crops.

**FULVITAL® Plus Liquid** is compatible with most plant growth promoting agents (pre-mixing test recommended).

## BENEFITS & RECOMMENDED APPLICATION

- Provides the plant with available organic chelated trace nutrients Fe, Zn, Mn and Cu
- Improves the uptake of nutrients by plants and reduces immobilisation of the nutrients in the soil
- Good compatibility with other materials in pH critical systems
- Stimulates vigorous root development
- Increases yields in the established cultivation system
- Promotes quicker seed germination and faster root and shoot growth
- Provides a valuable source of carbon for soil microorganisms
- Stimulates the enzymatic system in the plant, as well as improving plant transpiration

### FIELDS OF APPLICATION

- Agriculture
- Vegetable Production
- Fruit Production
- Substrate Cultivation
- Hydroponics
- Turf and Landscaping
- Seeds Treatment

### RECOMMENDED APPLICATION RATES\*

Soil	10 – 12 L/ha divided into several applications (2 – 3 L/ha) during the vegetation period
Foliar	1 – 2 ml/L every seven days during the vegetation period Substrates
Substrates	1.0 – 2.0 L/m <sup>3</sup>
Seeds	0.3 % or 300 ml/100 kg seeds as dressing according to thousand grain weight (T.G.W.)
Hydroponics	15 – 25 ml/1000 L nutrient solution during the cultivation cycle

\* These are standard recommendations that can vary according to soil properties, cultivated crop and local system conditions.

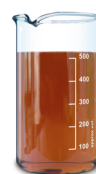
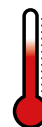
### INHERENT COMPOSITION (Typical values based on Fresh Matter)

Organic Substance	18 – 20 %	Zinc (Zn)	0,8 %
Dry Matter	55 %	Manganese (Mn)	0,6 %
pH – value	4 – 5	Copper (Cu)	0,4 %
Sulfur (S)	3,4 %	Magnesium (Mg)	1,3 %
Iron (Fe)	1,2 %	Density	1,3 kg/L

### STORAGE

Store in a dry place, protected from frost, heat and direct sunlight.

STORE OUT OF THE REACH OF CHILDREN



### DELIVERY SPECS



German technology

Administration & Distribution: **HUMINTECH GMBH**

Am Pösenberg 9 – 13 • 41517 Grevenbroich / Germany • E-Mail: info@humintech.com • Internet: www.humintech.com

