

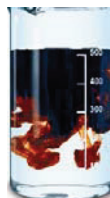
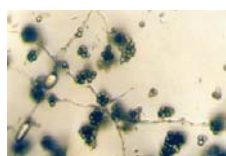
WATER SOLUBLE

DESCRIPTION

BioHealth® TH WSG is a blend of selected *Trichoderma harzianum* strains, humic acids and seaweed extract. *Trichoderma harzianum* nourishes on the root exudates in the rhizosphere. The plant is strengthened and can better overcome stress situations. In latently infected plant material **BioHealth® TH WSG** is ineffective, for the reason that the antagonist cannot follow the parasite into the interior of the plant. Therefore **BioHealth® TH WSG** has to be regarded as a soil conditioner or rather a plant intensifier, and not a fungicide against soil pathological fungi in the soil.

ORIGIN

BioHealth® TH WSG is obtained through alkaline extraction from German Leonardite (highly oxidized lignite), high quality isolated and selected *Trichoderma harzianum* strains and seaweed extract obtained from *Ascophyllum nodosum*.



COMPOSITION: (Typical analysis)

<i>Trichoderma Harzianum</i>	
Approx. 10 ⁶ spores and infection particles	
Potassium humate	Approx. 80%
Seaweed Extract	Approx. 5.0%
Dry Matter	Approx. 85-90%
Product Type	Water Soluble Powder

FORM OF DELIVERY



Bag
1/25 kg

Carton Box
1/10 kg



Administration & Distribution: Humintech GmbH
Am Pösenberg 9-13 • D 41517 Grevenbroich / Germany
Tel.: +49 (0) 2181 70 676 0 • Fax: +49 (0) 2181 70 676 22
E-Mail: info@humintech.com • Internet: www.humintech.com



TH BioHealth® WSG

Water Soluble Blend of *Trichoderma Strains* with HUMIC ACIDS AND SEAWEED EXTRACT

BENEFITS

- Increases the resistance of plant roots to stresses (drought, disease, high or low temperature and salt stress)
- Stimulates the growth of useful microorganisms in the root area
- Enhances the germination of seeds and increases their growth
- Increases the water retention capacity of the soil
- Increases the soil buffering capacity and neutralizes the soil pH, thus enhancing the uptake of fertilizers
- Binds salt in the soil and thus decreases salinisation
- Enhances the soil quality and increases the soil aeration

DIRECTION FOR USE* BioHealth® TH WSG

CROP	OBJECTIVE	RECOMMENDED APPLICATION
In all crops	Inoculation of sterile soils, prophylactic mixing before the infection, soil conditioning	3-4 kg/ha divided into several doses (1-2 kg/ha)
Vegetables in green houses	Inoculation of sterile soils, prophylactic mixing before the infection, soil conditioning	4-5 kg/ha divided into several doses (1-2 kg/ha) during the season or submerge the seedling before the transplantation
Horticultural fruit trees	Inoculation of sterile soils, prophylactic mixing before the infection, soil conditioning	4-5 kg/ha divided into several doses (1-2 kg/ha) during the season or submerge the seedling before the transplantation
Open field vegetables	Inoculation of sterile soils, prophylactic mixing before the infection, soil conditioning	4-5 kg/ha divided into several doses (1-2 kg/ha) during the season or submerge the seedling before the transplantation
Cereals, potatoes, legumes	Inoculation of sterile soils, prophylactic mixing before the infection, soil conditioning	3-4 kg/ha divided into several doses (1-2 kg/ha) before and during the season
Ornamental plants and tree nursery, turf grass, landscaping (in general)	Inoculation of sterile soils, prophylactic mixing before the infection, soil conditioning	3-4 kg/ha or 1 kg/m ³ during the preparation of substrates
Foliar application (only in green houses with high humidity)	Prophylactic treatment to prevent infection of leaves by pathogens	300-500 g/1000 L water every two weeks during the season
Seed treatment	Protection of seeds, early inoculation, Stimulation of seed germination and root growth	1-2 kg/100 kg seeds

* This recommendation could be varied according to the soil characteristics and farm conditions